

# 2017 ANNUAL LISTING OF OBLIGATED PROJECTS

Longview-Kelso-Rainier  
Metropolitan Planning Organization

March 30, 2018



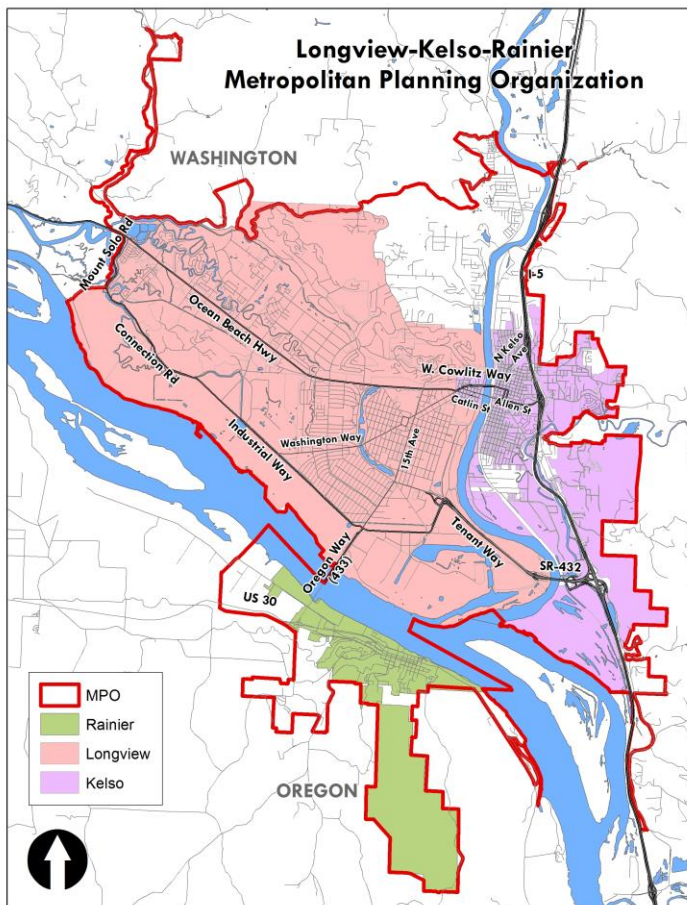
*207 4th Avenue North  
Administration Annex  
Kelso, WA 98626*

*360-577-3041  
FAX: 360-214-3425  
<http://www.cwcog.org>*

(This page intentionally left blank)

## AGENCY OVERVIEW

The Cowlitz-Wahkiakum Council of Governments (CWCOG) is a regional planning agency comprised of general and special member local governments from within Cowlitz and Wahkiakum counties. The CWCOG is the Longview-Kelso-Rainier Metropolitan Planning Organization (MPO) and the lead planning agency for a five-county Southwest Washington Regional Transportation Planning Organization (RTPO). The RTPO is a voluntary association of local governments from Cowlitz, Grays Harbor, Lewis, Pacific, and Wahkiakum Counties. As the Longview-Kelso-Rainier MPO, the planning area boundary includes Longview and Kelso, Washington and (crossing over the Columbia River) Rainier, Oregon. The Longview-Kelso-Rainier Metropolitan Planning Area (MPA) boundary is shown below.



As the Longview-Kelso-Rainier MPO, CWCOG is responsible to administer federal laws and regulations pertaining to metropolitan transportation planning and project programming. Some federal-aid funds allocated to CWCOG (i.e. Surface Transportation Block Grant Program [STP]) are to advance local transportation priorities within all of Cowlitz County and not only the MPA. In addition, CWCOG also manages STP funds in the Rainier, Oregon area.

## TITLE VI COMPLIANCE

CWCOG assures full compliance with Title VI of the Civil Rights Act of 1964 and the American Disabilities Act of 1990 by prohibiting discrimination against any person on the basis of race, color, national origin, sex, or disability in the provision of benefits and services resulting from its federally assisted programs and activities. For more information, or to obtain a Title VI Complaint Form, call the program coordinator at (360) 577-3041.

## INTRODUCTION

This Annual Listing of Obligated Projects provides a report of projects from the Regional Transportation Improvement Program (RTIP) that obligated federal transportation funds during the 2017 calendar year as required by federal regulations. This report is also an evaluation tool for CWCOCG to better monitor the implementation of multimodal transportation projects in the region. This report focuses only on the Washington portion of the MPA given that no federal funds were obligated on the Oregon side of the MPA during 2017.

The federal regulations (23 CFR § 450.334) specifically require the following.

*(a) In metropolitan planning areas, on an annual basis, no later than 90 calendar days following the end of the program year, the State, public transportation operator(s), and the MPO shall cooperatively develop a listing of projects (including investments in pedestrian walkways and bicycle transportation facilities) for which funds under 23 U.S.C. or 49 U.S.C. Chapter 53 were obligated in the preceding program year.*

*(b) The listing shall be prepared in accordance with §450.314(a) and shall include all federally funded projects authorized or revised to increase obligations in the preceding program year, and shall at a minimum include the TIP information under §450.326(g)(1) and (4) and identify, for each project, the amount of Federal funds requested in the TIP, the Federal funding that was obligated during the preceding year, and the Federal funding remaining and available for subsequent years.*

*(c) The listing shall be published or otherwise made available in accordance with the MPO's public participation criteria for the TIP.*

Below are explanations of the terms obligation, de-obligation, and closure.

### **Obligation**

In simple terms, obligation is a promise to pay the Federal share of a project's eligible costs. The obligation of the preliminary engineering, right-of-way, and/or construction phase is an authorization for the local agency to proceed knowing that eligible costs are reimbursable. For Federal Highway Administration (FHWA) projects, obligation occurs after a project agreement between WSDOT Local Programs and a local agency has been signed by all parties and a request is made that the funds be obligated. WSDOT's Local Agency Guidelines (LAG) manual provides all the details on process and required submittals that are needed to request obligation of a project phase(s). On Federal Transit Administration (FTA) projects, obligation occurs when an FTA grant is awarded.

### **De-obligation**

An agency may request that funds be de-obligated from a project if the agency has decided not to proceed with the project, if the agency has completed the project without using all obligated funds, or if funds are moved between phases within a single project. Funds may also be de-obligated when a project that was previously obligated moves from one funding source to another.

## **Closure**

The final stage of project delivery is the project close-out process. After a project has been completed, the close-out process wraps up any final reimbursements and officially closes the project. Project closures are listed in Table 1 when there are final obligations or de-obligations that are processed. Any projects that closed in 2017 without any final obligation or de-obligation are listed in Table 2.

## **REGIONAL TRANSPORTATION IMPROVEMENT PROGRAM**

The 2017-2020 Regional Transportation Improvement Program (RTIP) was approved by the CWCOG Board September 22, 2016. The RTIP is a four-year, fiscally constrained, and prioritized program of transportation projects compiled from local Transportation Improvement Programs (TIPs) that is consistent with the Regional Transportation Plan. Once a project has been programmed in an approved RTIP, the project's sponsor(s) can work on obligation of funds to start preliminary engineering, right-of-way acquisition, or construction.

## FEDERAL FUNDING SOURCES

Below is a list of federal funding sources used in Tables 1 and 2 starting on page six.

Fund Code	Description
HSIP	Highway Safety Improvement Program
NHPP	National Highway Performance Program
STP	Surface Transportation Block Grant Program
STP(US)	Surface Transportation Block Grant Program – Urban Small Areas
STP(R)	Surface Transportation Block Grant Program - Rural
High Priority (SAFETEA-LU)	Safe, Accountable, Flexible, Efficient Transportation Equity Act: A Legacy for Users High Priority Project Program
Section 117	Transportation, Treasury, Independent Agencies, and General Government Appropriations Act, 2005 Section 117 Surface Transportation Projects
Bridge	WSDOT-Managed Bridge Program
Rail/Highway Safety	WSDOT-Managed Rail/Highway Safety Program

More information regarding FHWA funding sources can be found at: [www.fhwa.dot.gov/federalaid/projects.cfm](http://www.fhwa.dot.gov/federalaid/projects.cfm)

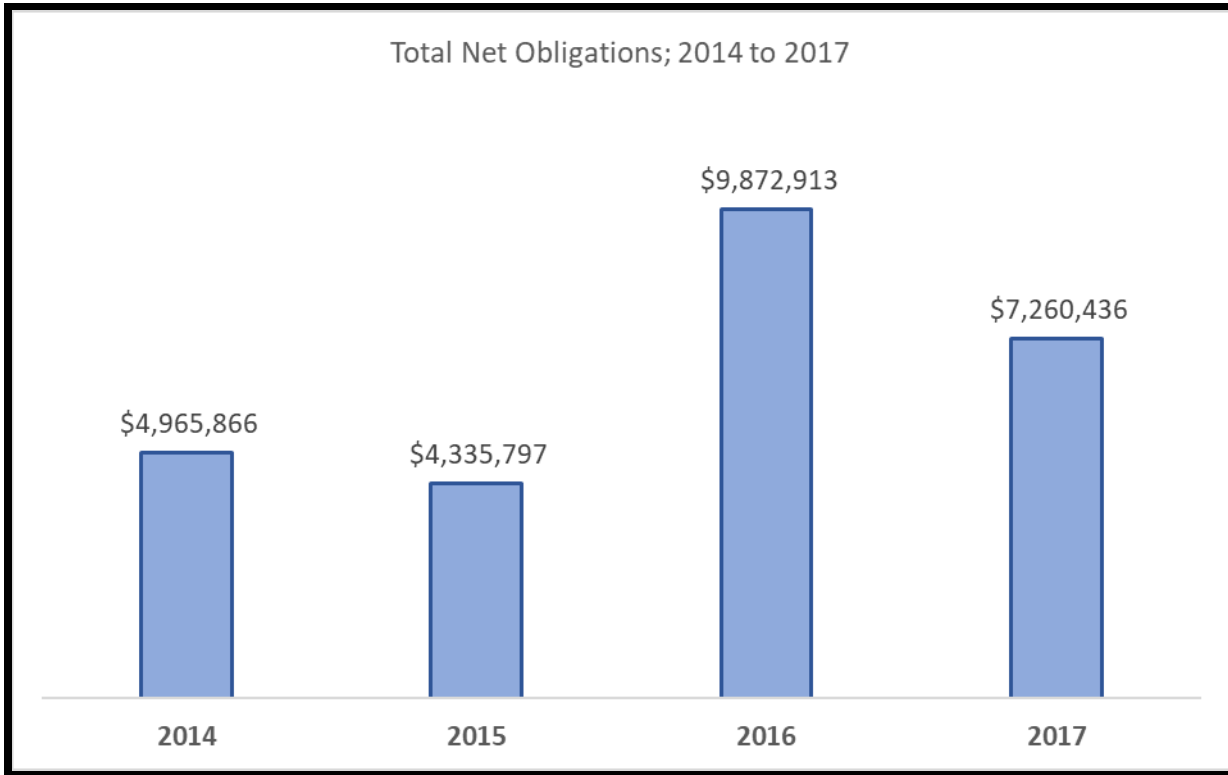
## ACRONYMS

The following is an explanation of acronyms used in Tables 1 and 2 starting on page six.

Acronym	Description
PE	Preliminary Engineering
RW	Right of Way
CN	Construction
RTIP	Regional Transportation Improvement Program
FTA	Federal Transit Administration
WSDOT	Washington State Department of Transportation
CWCOG	Cowlitz-Wahkiakum Council of Governments

## ANNUAL OBLIGATION SUMMARY

In 2017, the total net obligations in Cowlitz County were over \$7.2 million. This was a decrease from 2016, but still significantly higher than in 2014 and 2015. The chart below shows the total net obligations over the past four years.



**TABLE 1: 2017 OBLIGATED AND CLOSED PROJECTS**

STIP ID or PIN	Agency	Project Name	Begin Termini	Ending Termini	Project Length	Fund Code	Phase(s)	Federal Funds Programmed in 2017-2020 RTIP (\$)	Federal Funds Obligated in 2017 (\$)	Federal Funds De-obligated in 2017 (\$)	Federal Funds Remaining (\$)	Approved	Closed
WA-07481	Cowlitz County	Install/Upgrade Curve Warning Signs	County-wide	County-wide	N/A	HSIP	CN	Closure	16,034	0		8/14/17	
WA-05292	Cowlitz County	Willow Grove Road Guardrail	MP 4.3	MP 7.5	3.2	HSIP	CN	Closure		-16,034	0	8/14/17	
WA-03267	Kelso	West Main St. Realignment	Cowlitz Way	1 <sup>st</sup> Ave.	0.38	STP (US)	RW	Closure	3,373.59	0		4/28/17	4/12/17
WA-03267	Kelso	West Main St. Realignment	Cowlitz Way	1 <sup>st</sup> Ave.	0.38	High Priority (SAFETE A-LU)	PE	Closure		-694.47	0	4/28/17	4/12/17
WA-03267	Kelso	West Main St. Realignment	Cowlitz Way	1 <sup>st</sup> Ave.	0.38	STP (US)	PE	Closure		-0.08	0	4/28/17	4/12/17
WA-03267	Kelso	West Main St. Realignment	Cowlitz Way	1 <sup>st</sup> Ave.	0.38	STP (US)	CN	Closure		-3,373.51	0	4/28/17	4/12/17
WA-09805	Longview	Washington Way & 15th Ave. Corridor Traffic Signal Improvements	Various I/S	Various I/S	1.5	HSIP	PE		184,000	184,000	0	7/31/17	
WA-09215	Longview	Downtown Transit Center Expansion	Hemlock St.	Florida St.	N/A	STP (US)	PE		467,100	467,100	0	7/11/17	
WA-00426	Castle Rock	Huntington Avenue South Overlay	Front Ave. SW	Bond Rd.	1.16	STP(R)	PE		95,150	94,977	173	10/23/17	



STIP ID or PIN	Agency	Project Name	Begin Termini	Ending Termini	Project Length	Fund Code	Phase(s)	Federal Funds Programmed in 2017-2020 RTIP (\$)	Federal Funds Obligated in 2017 (\$)	Federal Funds De-obligated in 2017 (\$)	Federal Funds Remaining (\$)	Approved	Closed
WA-09215	Longview	Downtown Transit Center Expansion	Hemlock St.	Florida St.	N/A	STP (US)	PE	467,100		-467,100	467,100	11/20/17	
WA-09215	Longview	Downtown Transit Center Expansion	Hemlock St.	Florida St.	N/A	STP (US)	PE/RW	567,100	567,100 (TRANSFER TO FTA)		0	11/30/17	
WA-04246	Longview	15 <sup>th</sup> Ave. Corridor Safety Project	Delaware St.	Washington Way	0.75	HSIP	PE	Closure	19,252.26		0	3/23/17	3/29/17
WA-04246	Longview	15 <sup>th</sup> Ave. Corridor Safety Project	Delaware St.	Washington Way	0.75	HSIP	CN	Closure		-113,355.83	0	3/23/17	3/29/17
CWCOG 2	CWCOG	I-5/SR432 Modernization Ph 2	SR432 W Ramp Term.	Old Pacific Hwy South	0.379	Section 117	PE	Closure		-22,974.43	0	10/19/17	11/1/17
450416C	WSDOT	SR504/Wooster Creek – Culvert Replacement Chronic Environmental Deficiency	16.99	17.01	0.02	STP	PE	Closure	253,756		0	2/28/17	
450416C	WSDOT	SR504/Wooster Creek – Culvert Replacement Chronic Environmental Deficiency	16.99	17.01	0.02	STP	PE	Closure	48,000		0	9/1/17	

STIP ID or PIN	Agency	Project Name	Begin Termini	Ending Termini	Project Length	Fund Code	Phase(s)	Federal Funds Programmed in 2017-2020 RTIP (\$)	Federal Funds Obligated in 2017 (\$)	Federal Funds De- obligated in 2017 (\$)	Federal Funds Remaining (\$)	Approved	Closed
450416C	WSDOT	SR504/Wooster Creek – Culvert Replacement Chronic Environmental Deficiency	16.99	17.01	0.02	STP	CN	2,737,172	2,902,071		-164,899	6/8/17	
450416C	WSDOT	SR504/Wooster Creek – Culvert Replacement Chronic Environmental Deficiency	16.99	17.01	0.02	STP	CN	2,737,172		-164,899	0	9/1/17	
450318S	WSDOT	SR503 Spur/Speelyai Creek Bridge to Skamania County – Chip Seal	32.51	39.73	7.22	STP	PE	107,817	107,818		-1	6/5/17	
450318P	WSDOT	SR503/Rock Creek Rd Vicinity to Williams Rd Vicinity - Paving	13.71	29.96	16.25	STP	PE	107,818	53,909		53,909	9/1/17	
450316P	WSDOT	SR503/Yale Bridge - Paving	27.82	27.93	0.15	NHPP	PE	Closure		-17,212	0	1/26/17	
450316P	WSDOT	SR503/Yale Bridge - Paving	27.82	27.93	0.15	NHPP	CN	Closure	12,500		0	1/26/17	
443119P	WSDOT	SR432/Cowlitz River Bridge - Painting	9.58	9.89	0.31	Bridge	PE	168,000	168,000		0	6/8/17	

STIP ID or PIN	Agency	Project Name	Begin Termini	Ending Termini	Project Length	Fund Code	Phase(s)	Federal Funds Programmed in 2017-2020 RTIP (\$)	Federal Funds Obligated in 2017 (\$)	Federal Funds De-obligated in 2017 (\$)	Federal Funds Remaining (\$)	Approved	Closed
443119P	WSDOT	SR432/Cowlitz River Bridge - Painting	9.58	9.89	0.31	STP	PE	168,000	24,000		-24,000	9/20/17	
443218R	WSDOT	SR432/Tennant Way RR XING – Bus and Truck Pullout Lanes	8.36	8.72	0.36	Rail/ Highway Safety	PE	Closure		-14,829.88	0	6/9/17	
443218R	WSDOT	SR432/Tennant Way RR XING – Bus and Truck Pullout Lanes	8.36	8.72	0.36	Rail/ Highway Safety	PE	Closure		-6,458.06	0	6/9/17	
443218R	WSDOT	SR432/Tennant Way RR XING – Bus and Truck Pullout Lanes	8.36	8.72	0.36	Rail/ Highway Safety	PE	Closure		-128,191.62	0	6/9/17	
443216P	WSDOT	SR432/SR4 to Industrial Way Vicinity - Paving	0	7.19	7.19	NHPP	CN	1,765,493	132,300		1,633,193	5/23/17	
443216P	WSDOT	SR432/SR4 to Industrial Way Vicinity - Paving	0	7.19	7.19	STP	CN	1,765,493	151,093		1,482,100	9/7/17	
443214B	WSDOT	SR432/Cowlitz River Bridge – Deck Repair and Overlay	9.58	9.89	0.31	NHPP	CN	977,550	977,517		33	5/23/17	
443214B	WSDOT	SR432/Cowlitz River Bridge – Deck Repair and Overlay	9.58	9.89	0.31	NHPP	CN	977,550	151,514		-151,481	7/13/17	

STIP ID or PIN	Agency	Project Name	Begin Termini	Ending Termini	Project Length	Fund Code	Phase(s)	Federal Funds Programmed in 2017-2020 RTIP (\$)	Federal Funds Obligated in 2017 (\$)	Federal Funds De- obligated in 2017 (\$)	Federal Funds Remaining (\$)	Approved	Closed
400518D	WSDOT	I-5/1.7 miles S of Todd Road to Kalama River Rd. – Deck Repair	26.01	31.82	5.81	NHPP	PE	150,912	78,412		72,500	7/28/17	
400518B	WSDOT	I-5 SB/1-mile S of Todd Road Vicinity to N Kelso Ave. Vicinity - Paving	26.30	40.71	14.42	NHPP	PE	137,222	137,222		0	6/8/17	
400518A	WSDOT	I-5 NB/1-mile S of Todd Rd Vicinity to Weigh Station Vicinity – Paving	26.44	43.92	17.48	NHPP	PE	137,222	87,150		50,072	6/7/17	
400518A	WSDOT	I-5 NB/1-mile S of Todd Rd Vicinity to Weigh Station Vicinity – Paving	26.44	43.92	17.48	NHPP	PE	137,222	50,072.15		-0.15	6/7/17	
400517W	WSDOT	I-5/Woodland Vicinity at Horseshoe Lake – Upgrade Pump System	N/A	N/A	N/A	STP	PE	Closure	144,000		0	8/18/17	
400517B	WSDOT	I-5/SB North Fork Lewis River Bridge - Resurfacing	N/A	N/A	N/A	NHPP	PE	Closure	36,000		0	3/31/17	

STIP ID or PIN	Agency	Project Name	Begin Termini	Ending Termini	Project Length	Fund Code	Phase(s)	Federal Funds Programmed in 2017-2020 RTIP (\$)	Federal Funds Obligated in 2017 (\$)	Federal Funds De-obligated in 2017 (\$)	Federal Funds Remaining (\$)	Approved	Closed
400517B	WSDOT	I-5/SB North Fork Lewis River Bridge - Resurfacing	N/A	N/A	N/A	NHPP	CN	Closure	1,015,607		0	4/11/17	
400517B	WSDOT	I-5/SB North Fork Lewis River Bridge - Resurfacing	N/A	N/A	N/A	NHPP	CN	Closure	279,770.50		0	6/16/17	
400018R	WSDOT	SWR Regionwide Safety – Shoulder Rumble Strips 17-19	Various	Various	N/A	HSIP	PE	9,600	19,200		-9,600	8/16/17	
400018B	WSDOT	SWR Breakaway Cable Terminal Replacement - Interstate	Various	N/A	N/A	HSIP	PE	12,480	3,643.80		8,836.20	9/18/17	
400018B	WSDOT	SWR Breakaway Cable Terminal Replacement - Interstate	Various	N/A	N/A	HSIP	PE	12,480	31,556.33		-22,720.13	9/18/17	
400017I	WSDOT	SR432/Kelso – Longview Area – Replace Lighting Circuits	0.80	8.70	7.9	NHPP	PE	Closure		-723.31	0	4/5/17	

STIP ID or PIN	Agency	Project Name	Begin Termini	Ending Termini	Project Length	Fund Code	Phase(s)	Federal Funds Programmed in 2017-2020 RTIP (\$)	Federal Funds Obligated in 2017 (\$)	Federal Funds De- obligated in 2017 (\$)	Federal Funds Remaining (\$)	Approved	Closed
400014R	WSDOT	SR4 and SR432 Centerline Rumble Strips - Safety	Various	Various	N/A	HSIP	PE	Closure		-666.70	0	5/11/17	
<b>TOTALS</b>									<b>8,216,949</b>	<b>-956,513</b>			
<b>TOTAL NET OBLIGATIONS WITHIN COWLITZ COUNTY FOR 2017:</b>									<b>\$7,260,436</b>				

**TABLE 2: ADDITIONAL CLOSED PROJECTS**

There were three (3) projects in Cowlitz County that closed in 2017 without any final obligations or de-obligations being processed. The projects are listed below.

STIP ID or PIN	Agency	Project Name	Begin Termini	Ending Termini	Project Length	Fund Code	Phase(s)	Closed Amount (\$)	Closed
WA-06696	Castle Rock	Exit 49 Pedestrian Improvement Project	Dougherty Drive	300' W of Salmon Cr	0.25	TAP(R)	PE	33,518	8/18/17
WA-06696	Castle Rock	Exit 49 Pedestrian Improvement Project	Dougherty Drive	300' W of Salmon Cr	0.25	TAP(R)	CN	229,658	8/18/17
WA-03113	Cowlitz County	South Cloverdale Road/Martins Bluff Road Intersection	I/S	I/S	0.2	HSIP	PE	9,000	4/20/17
WA-03113	Cowlitz County	South Cloverdale Road/Martins Bluff Road Intersection	I/S	I/S	0.2	HSIP	CN	75,000	4/20/17
WA-0738	Kalama	City Center Pavement Preservation (E Frontage Rd)	Oak St	Holly St	1.02	STP(R)	PE	44,028	6/26/17
WA-0738	Kalama	City Center Pavement Preservation (E Frontage Rd)	Oak St	Holly St	1.02	STP(R)	CN	362,544	6/26/17